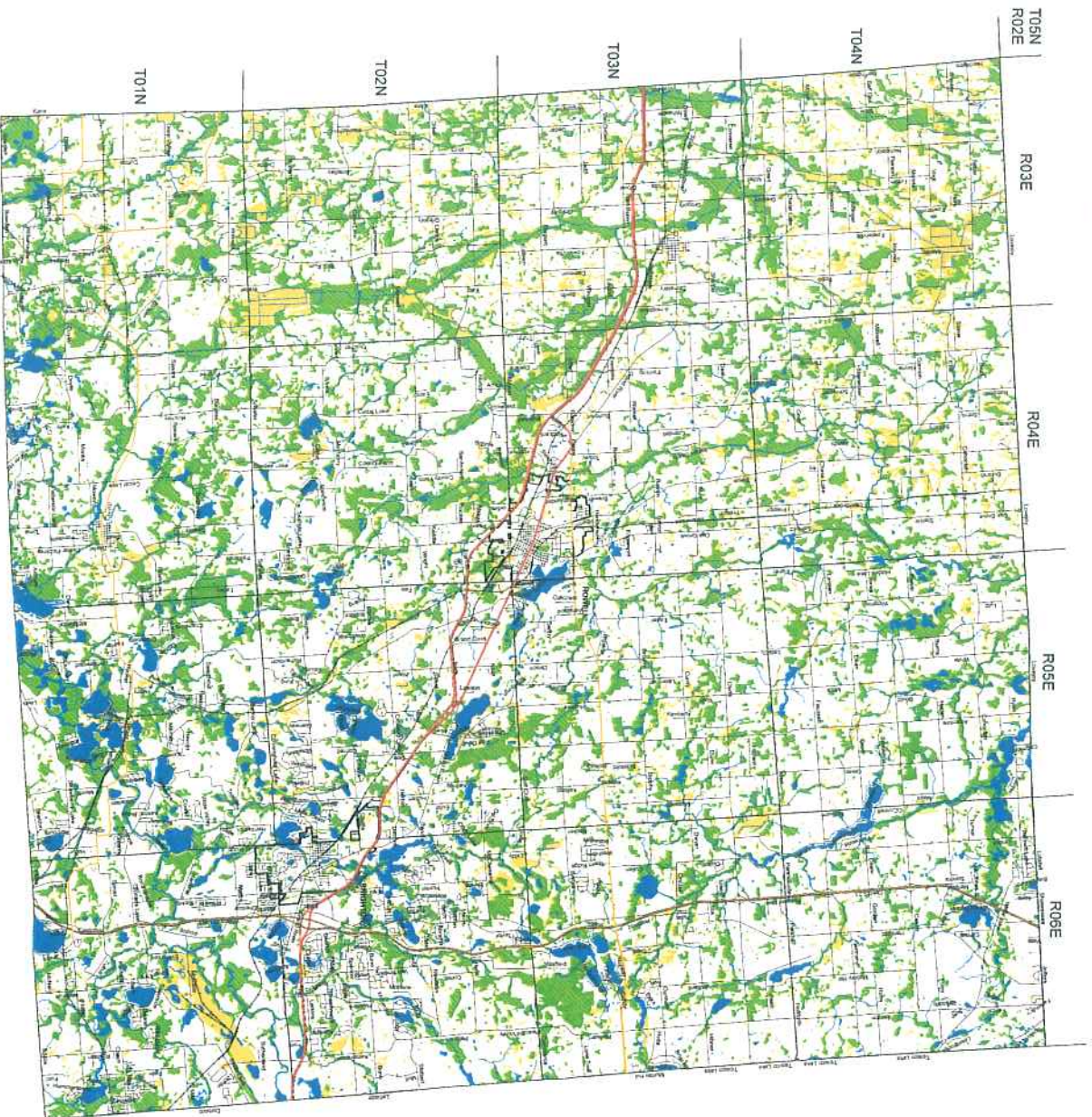


Livingston County Final Wetland Inventory



Livingston County Final Wetland Inventory

The Multiple Department of Environmental Quality (MDDEQ) Wetland Inventory Map was developed for use in the wetland inventory project. The MDDEQ provided the map from the following data obtained from other agencies or organizations:

1. The National Wetland Inventory (NWI) provided by the United States Fish and Wildlife Service (USFWS).
2. Wetland Inventory Data (WID) provided by the United States Fish and Wildlife Service (USFWS).
3. Wetland Inventory Data (WID) provided by the United States Fish and Wildlife Service (USFWS).

This map is not intended to be used to determine the specific location and jurisdiction of wetland areas. It is intended to provide a general overview of wetland areas. The map is not a substitute for a field visit or a detailed site-specific inventory. The map is intended to provide a general overview of wetland areas. The map is not a substitute for a field visit or a detailed site-specific inventory. The map is intended to provide a general overview of wetland areas. The map is not a substitute for a field visit or a detailed site-specific inventory.



Legend

- Interstate Highways
- US Highways
- State Highways
- Railways
- Open Water
- Rivers
- Drains
- Wetlands as identified on NWI and MNRIS maps
- Soil areas which include wetland soils
- Wetlands as identified on NWI and MNRIS maps and soil areas which include wetland soils
- County Boundary



Livingston County, Georgia
 This map was prepared by the Livingston County Department of Planning and Economic Development. The map is intended to provide a general overview of wetland areas. The map is not a substitute for a field visit or a detailed site-specific inventory. The map is intended to provide a general overview of wetland areas. The map is not a substitute for a field visit or a detailed site-specific inventory. The map is intended to provide a general overview of wetland areas. The map is not a substitute for a field visit or a detailed site-specific inventory.

Copyright © 2010 Livingston County, Georgia